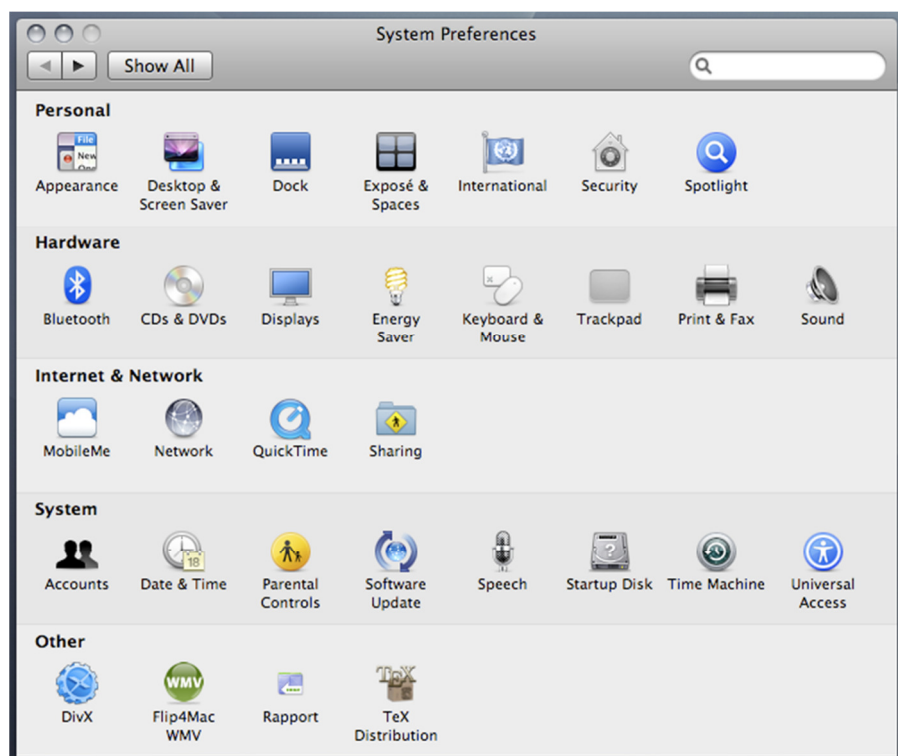


Printing Setup Instructions: Apple Mac OS X (v.10.5 or later)

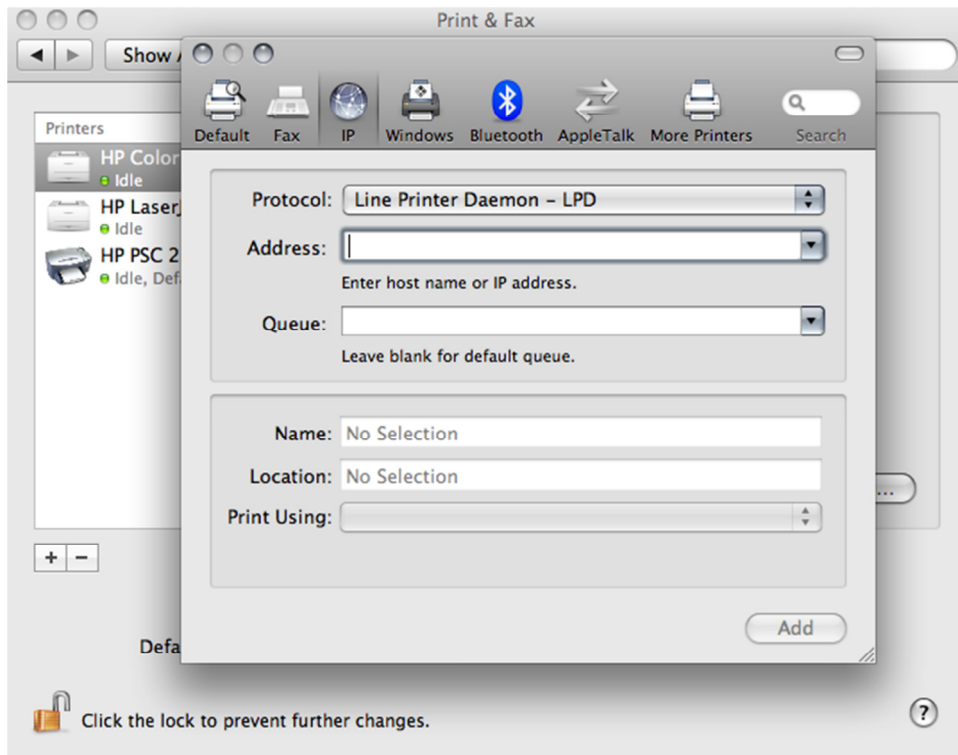
Open **System Preferences** from the **Apple** menu



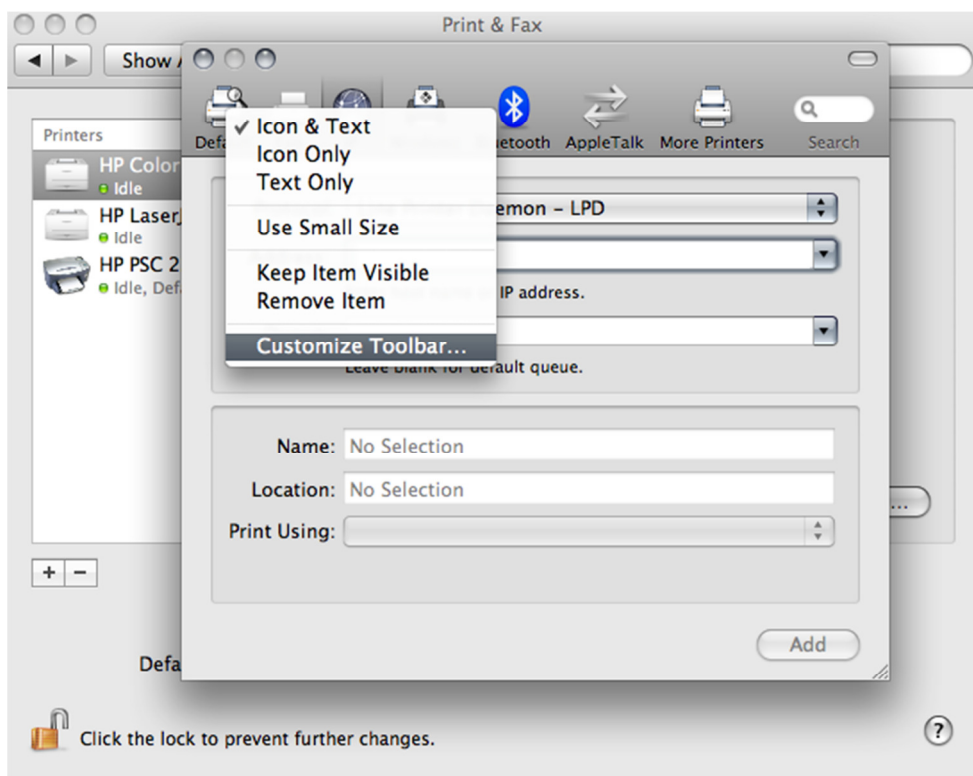
Choose **Print & Fax** from the **View** menu

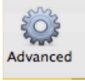


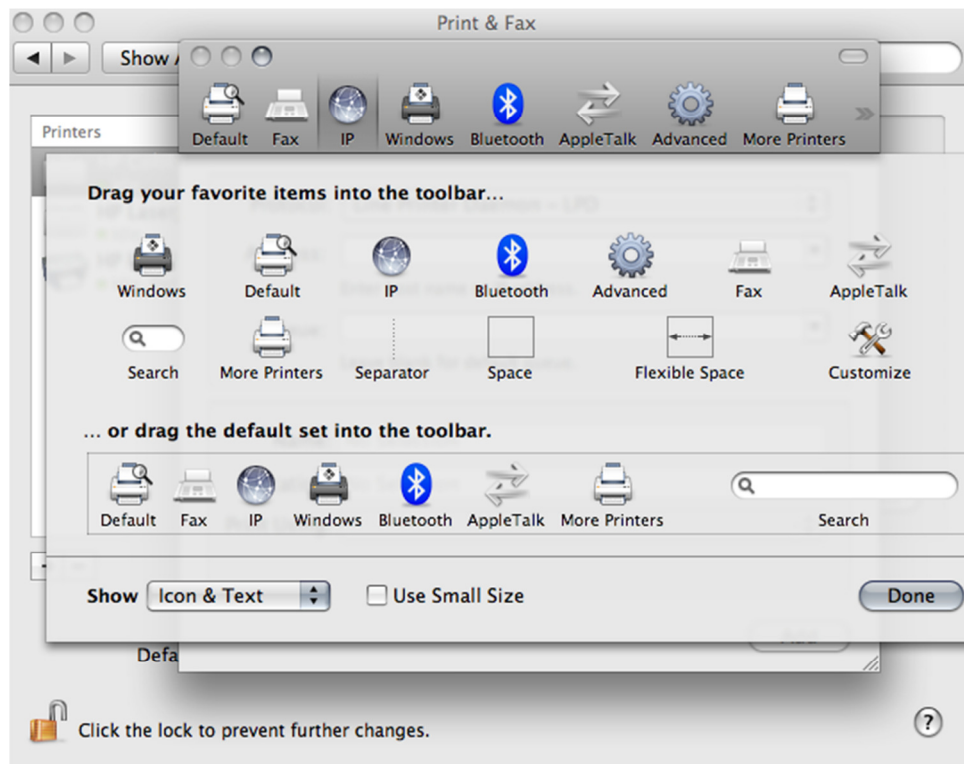
Click on the **+** sign at the bottom of the list of printers to **Add a printer**.



Press the **Control** key while clicking the 'Default' icon (or any other icon on the toolbar), then choose **Customize Toolbar** from the **contextual** menu that appears.

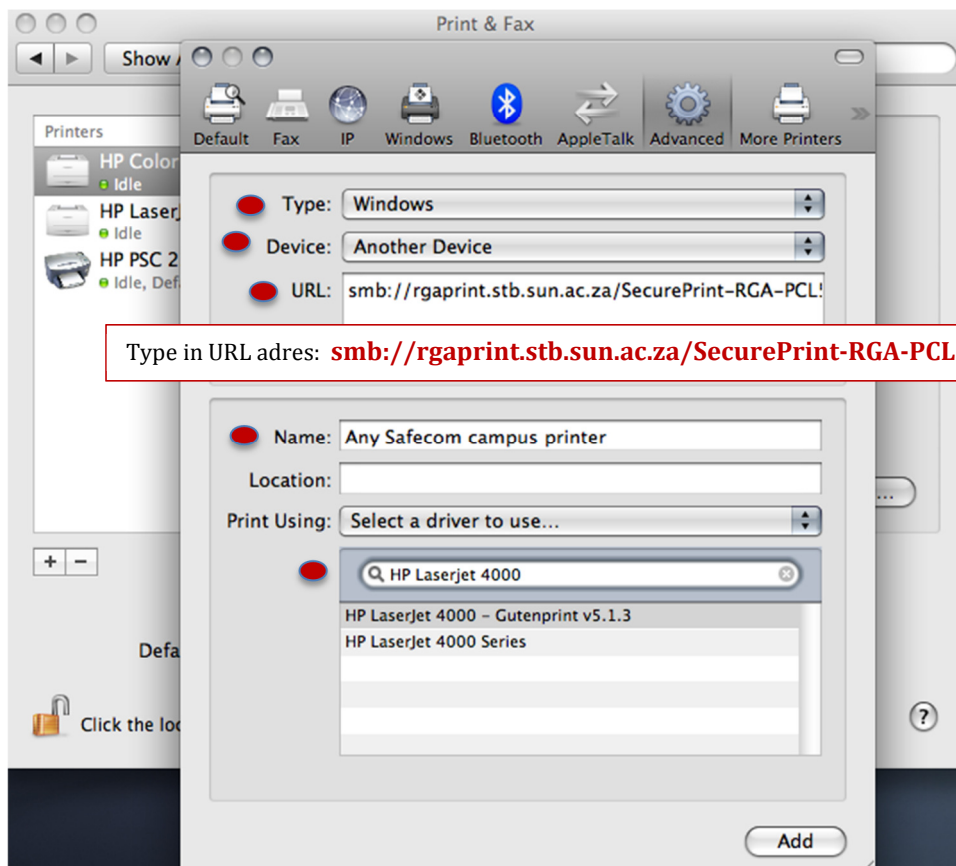


Drag the  **Advanced** (gear) icon to the toolbar. Click **Done**.



Click the **Advanced** (gear) icon that was added to the toolbar.

Complete the dialog box as shown below and click **Add**.



Ensure that the **Safecom printer queue** you have added is set to be the **default printer** on your Apple MAC.

